

## 2007 Annual Demographic Profile

### Navarro County, Texas



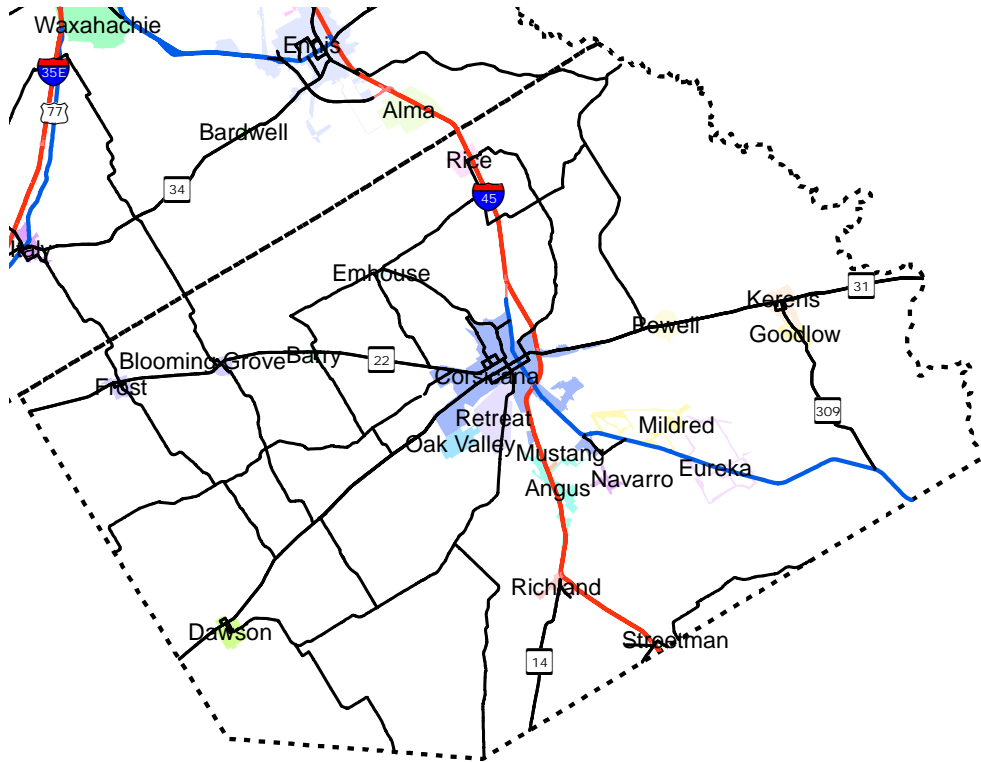
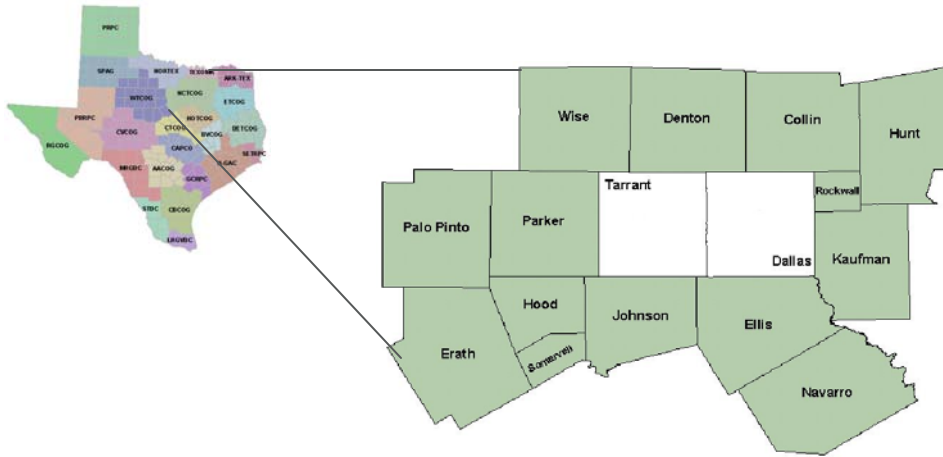
North Central Texas WorkForce is committed to preparing the workforce of tomorrow. Through our partnerships with business, education and other community organizations we are dedicated to leading the way to strengthen our local economy as well as to develop a quality workforce.

With 15 workforce centers to serve you as well as on-line assistance, we can find the right solution for you.

[www.dfwjobs.com](http://www.dfwjobs.com)

## Overview

Navarro County had an estimated population of 45,124 in 2000. The region consists of 1,086 square miles with a population density of 41.55 residents per square mile compared to a statewide density of 79.54. This county ranked 62<sup>nd</sup> in 2000 Census population counts compared to all 254 counties in Texas. This area is a rural county. This county also ranked 59<sup>th</sup> in size by square miles when compared to all counties in Texas. The largest employer for Navarro County is Russell Stover employing approximately 900 employees in Corsicana, TX.



**Total Population**

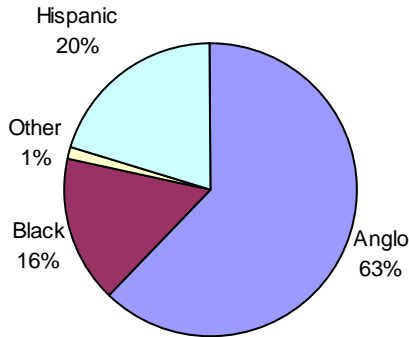
	1990 Census	2000 Census	2005 Census Estimate*	2011 Projection**
Texas	16,986,524	20,851,820	22,928,508	25,219,040
Navarro County	39,926	45,124	48,687	53,779
City of Angus	363	334	378	899
City of Barry	175	209	225	242
Town of Blooming Grove	847	833	918	962
City of Corsicana	22,911	24,485	26,052	n/a
Town of Dawson	766	852	906	916
Town of Emhouse	195	159	174	184
City of Eureka	242	340	371	787
City of Frost	579	648	709	1,052
City of Goodlow	319	264	283	378
City of Kerens	1,702	1,681	1,803	n/a
Town of Mildred	173	405	441	682
Town of Mustang	35	47	53	134
Town of Navarro	193	191	210	543
Town of Oak Valley	388	401	447	458
Town of Powell	101	105	112	145
Town of Retreat	334	339	377	425
City of Rice	564	798	924	1,046
Town of Richland	244	291	316	350
City of Streetman	260	203	209	n/a

Source: \*2005 ACS estimates released by Census October 2006.

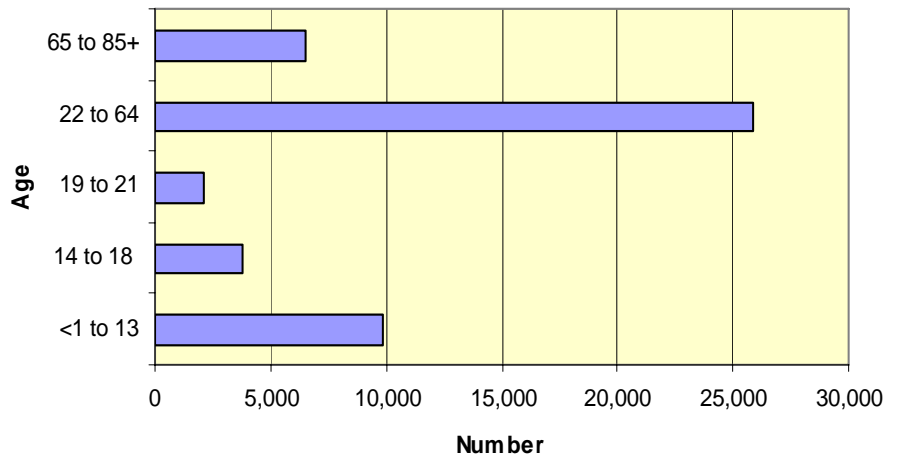
\*\*Sites on Texas data. [Please note; due to different methods of calculation, projections may not appear realistic]

NOTE: Some cities bordering other Counties are not included.

**2006 Population by Race  
Navarro County**



**Population By Age Group  
Navarro County**



Source: Texas State Data Center

## Educational Attainment

	1990 Census	2000 Census	2006 Estimate	2011 Estimate
Population 25 Years and over	25,239	28,362	31,081	34,706
Grade Kindergarten — 8	3,833	2,687	3,422	3,648
Grade 9 — 12	5,128	4,701	4,527	4,547
High School Graduate	7,213	9,277	10,498	11,985
Some College, no Degree	4,517	5,968	6,626	7,431
Associate Degree	1,364	1,614	1,945	2,313
Bachelor's Degree	1,910	2,239	2,644	3,129
Graduate or professional Degree	1,275	1,235	1,419	1,653

Source: Sites on Texas

### Universities and Colleges within Navarro County

- Navarro College

In 2005, 540 (85.3%) graduated, 28 (4.4%) received GED, 38 (6.0%) continued high school and 27 (4.3%) dropped out of high school.

The numbers dropped out decreased whereas those that continued high school and received GED's increased. Numbers that graduated remained relatively the same since 2000 in comparison to 2005.

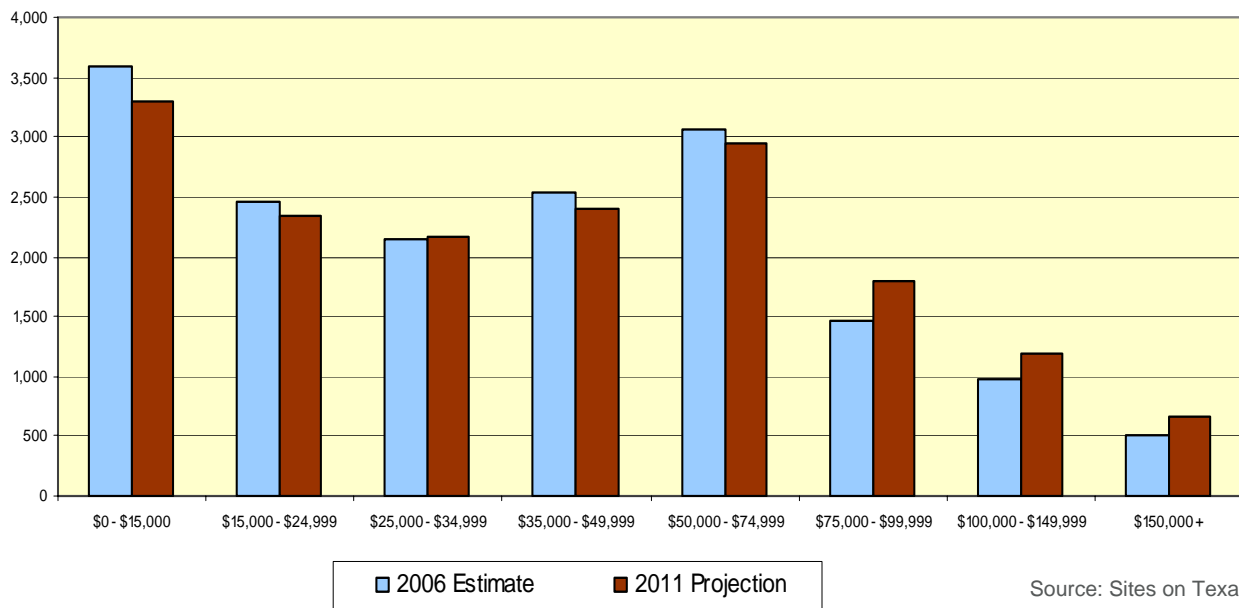
Source: The State of Texas Children 2006  
[http://www.cppp.org/factbook06/county\\_profile.php?fipse=48121](http://www.cppp.org/factbook06/county_profile.php?fipse=48121)

Income Statistics	
2004 Total Personal Income, excluding farm	\$1,060,397.
2004 Per Capita Personal Income	\$21,993.
2004 Earnings by Place of Work	\$612,942. (3.2% increase from 2003)

Average Household Income : 2006 Estimate	\$44,955.
Median Household Income: 2006 Estimate	\$35,812.

Source: BEA for 2004 data. Sites on Texas for 2006 estimates

### Number of Households by Income

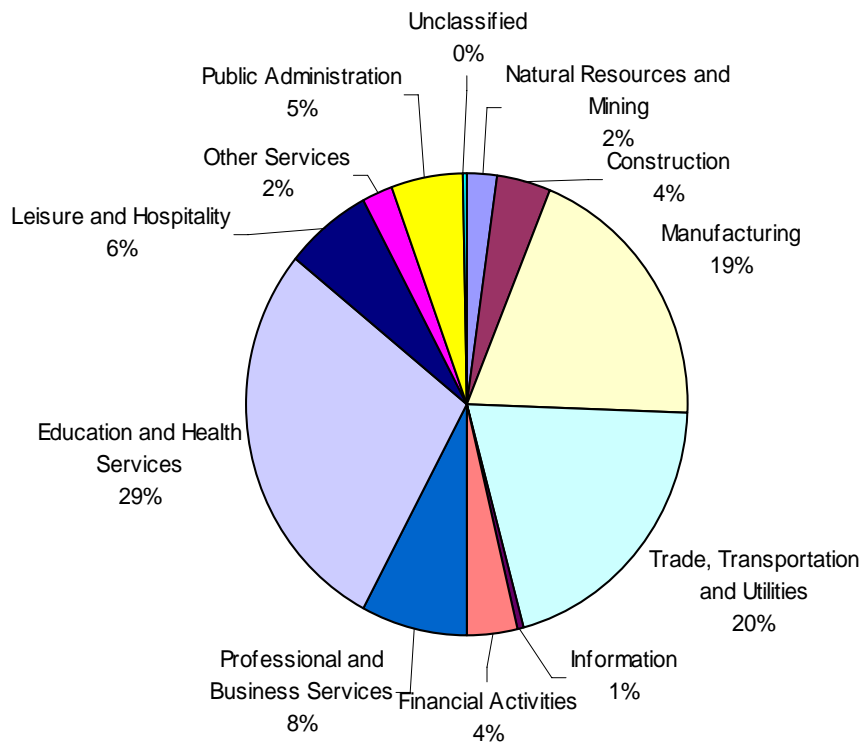


Percent of Population per Age Group within each Income Bracket (Source: Sites on Texas)							
Income by Age of Head of Householder (2006 Estimate — %)	Age 15-24	Age 25-34	Age 35-44	Age 45-54	Age 55-64	Age 65-74	Age 75+
\$0—\$19,999	38.4%	26.1%	22.6%	19.1%	24.7%	39.9%	46.0%
\$20,000—\$39,999	32.1	31.0	25.6	22.0	25.8	24.5	25.2
\$40,000—\$59,999	11.0	21.2	22.3	19.5	14.7	15.5	10.8
\$60,000—\$74,999	7.2	9.5	11.8	14.2	11.0	6.4	7.0
\$75,000—\$99,999	4.1	6.9	9.4	13.0	11.2	6.6	4.5
\$100,000—\$124,999	1.8	2.7	5.2	5.2	5.4	2.6	2.7
\$125,000—\$149,999	1.6	0.8	1.3	2.7	3.4	1.5	0.8
\$150,000+	3.6	1.8	1.9	4.2	3.8	2.9	3.0

Labor Market Information				
	Labor Force	Employment	Unemployment	Unemployment Rate
January 2006	21,825	20,614	1,211	5.5%
February 2006	21,193	19,952	1,241	5.9%
March 2006	21,235	19,999	1,236	5.8%
April 2006	21,309	20,100	1,209	5.7%
May 2006	21,288	20,077	1,211	5.7%
June 2006	21,577	20,156	1,421	6.6%
July 2006	21,725	20,342	1,383	6.4%
August 2006	21,456	20,224	1,232	5.7%
September 2006	21,479	20,359	1,120	5.2%
October 2006	21,588	20,532	1,056	4.9%
November 2006	21,623	20,564	1,059	4.9%
December 2006	21,435	20,462	973	4.5%

Source: Texas Workforce Commission, LAUS data

### Employment by Industry - Navarro County (2006-Q3)



Source: Texas Workforce Commission, QCEW data

## Major Employers in Navarro County employing 100+

Blooming Grove High School (School)	Navarro College (School)
Blooming Grove Independent School District (School)	Navarro Pecan Co. (Salted & Roasted Nuts & Seeds-mfrs)
Collin Street Bakery	Navarro Regional Hospital (Hospital)
Corsicana Bedding Inc. (Mattress/foundations-mfrs)	NCARC(Social service & welfare organization)
Corsicana City Hall (Government)	Oil City Iron Works Inc. (Heat treating metal-mfrs)
Corsicana High School (School)	Pactiv Corp (Plastics, foam-mfrs)
Corsicana State Home (Government)	Ryder (Transportation)
Educare (Group Home)	Swift-Corsicana (Trucking-motor freight)
Falcon Business Forms Inc. (Commercial Printing Nec)	Lance (Potato chips/snacks-mfrs)
Guardian Industries Corp. (Glass-mfrs)	Trimmings Inc. (candles)
Heritage Oaks Retirement (Nursing & Convalescent Homes)	Trinity Mother Frances Health System (Healthcare)
Home Depot (Home Improvement)	Tru Serv (Hardware-wholesale)
Jeld-Wen Inc. (Windows-mfrs)	US Army National Guard (Government)
Jose Antonio Navarro (School)	Wal-Mart (Department store)
Kerens Superintendents Office (School)	Watkins Construction (Pipe Line Contractors)
Kohl's Distribution Center (Department Store)	Westside Development Center (Nursing & Convalescent Homes)
Medical Arts Clinic (Physicians & Surgeons)	

Source: Texas Industry Profiles, various Local Economic Development organizations and Chambers of Commerce

To help better serve you and your needs, please contact the closest Workforce Center near you.

**Collin County:**

1713 W. Louisiana St.  
McKinney, TX, 75070  
(972) 542-3381  
(972) 548-8173 (fax)

820 Jupiter, Suite 100  
Plano, TX 75074  
(469)229-0099  
(469) 229-0088 (fax)

**Denton County:**

1300 Teasley Lane  
Denton, TX 76205  
(940) 382-6712  
Metro: (972)434-3870  
(940)323-4391 (fax)

**Ellis County:**

1712 West Business 287  
Waxahachie, TX 75168  
(972) 937-8114  
(972) 937-1719 (fax)

**Erath County:**

2165 West South Loop,  
Suite 1,  
Stephenville, TX 76401  
(254) 965-5100,  
(254) 965-6843 (fax)

**Hood/Somervell County:**

919 E. Hwy 377, Suite 8  
Granbury, TX 76048  
(817) 573-4282  
(817) 573-1387 (fax)

**Hunt County:**

2500 Stonewall, Suite 201  
Greenville, TX 75401  
(903) 454-9350  
(903) 454-9855 (fax)

**Johnson County:**

1206 West Henderson St.  
Cleburne, TX 76031  
(817)641-6201  
(817) 641-7057 (fax)

**Kaufman County:**

109 Tejas, Suite 300  
Terrell, TX 75160  
(972) 563-7271  
(972) 563-0630 (fax)

**Navarro County:**

720 N. Beaton St.  
Corsicana, TX 75110  
(903) 874-8276  
(903) 872-7804 (fax)

**Palo Pinto County:**

2307 East Hubbard Street  
Mineral Wells, TX 76067  
(940) 325-2595  
(940) 325-2157 (fax)

**Parker County:**

126 College Park Dr.  
Weatherford, TX 76086  
(817) 594-0049  
(817) 594-0329 (fax)

**Rockwall County:**

102 S. 1st Street, Suite C  
Rockwall, TX 75087  
(972)722-1573  
(972) 722-1798 (fax)

**Wise County:**

1810 S. Hwy 51, #8  
Decatur, TX 76234  
(940) 627-3919  
(940)627-3447 (fax)

North Central Texas  
WorkForce Board  
600 Six Flags Drive  
P.O. Box 5888,  
Arlington, TX 76005-5888

[www.dfwjobs.com](http://www.dfwjobs.com)